

# KSYRIUM SLR *Front (clincher version)*

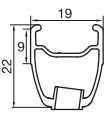



**Use: for road bike use only.** Any other use (such as on a tandem, cyclo-cross bike, or off-road use...) is highly inadvisable, is the sole responsibility of the user and voids the Mavic warranty.  
Recommended maximum weight of the cyclist and equipment: 100 kg.

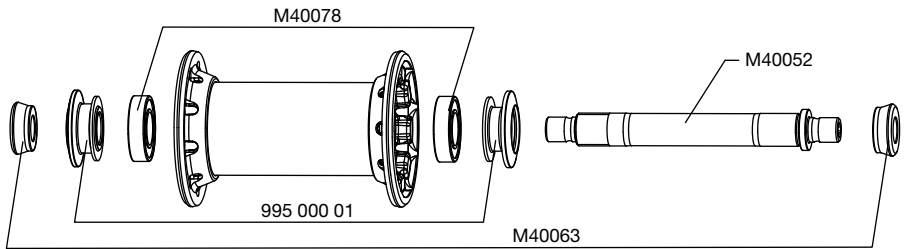
## WHEEL WEIGHT WITHOUT QUICK-RELEASE SKEWER AND WITHOUT TIRE

Front 635 g

## WHEEL REFERENCES

Front 111 369 10

RIMS	SALES REFERENCES: Clincher Front: 120 208 10	
	 <b>Ø VALVE HOLE</b> Ø: 6.5 mm Length: ≥ 32 mm	 <b>RECOMMENDED TIRE WIDTH</b> Dimensions: ETRTO 622 x 15C Recommended tire width: 19 to 28 mm
	 <b>EXALITH:</b> for efficient and long-lasting braking performance, use only the special Mavic® Exalith® brake pads supplied with your wheels. The use of other brake pads may be dangerous for the user and may void the warranty. Please carefully read the «Exalith Warning» provided with your wheels. Clean with a dry cloth or soapy water if necessary. The brake pads can be ordered separately using the following references 120 164 01 (HG, Sram, Mavic) and 120 165 01 (ED).	

HUBS	MAINTENANCE: Clean with a dry cloth or soapy water if necessary. Do not use a high-pressure washer.
	

WHEEL BUILDING	REFERENCES AND LENGTHS: Front: 120 302 01, length 284.5 mm (per 12, integrated nipples)
<b>FEATURES:</b> Black bladed, straight pull Zicral spokes with integrated and self-locking M7 nipples	<b>LACING PATTERN:</b> Front: radial
	<b>TENSION:</b> Front: 110 to 130 kg

ACCESSORIES	WHEELS SUPPLIED WITH:	MAINTENANCE
<ul style="list-style-type: none"> <li>• BR 601 front quick-release skewer M40149</li> <li>• Computer magnet M40540</li> <li>• Wheel bag M40135</li> <li>• 2 pairs of Mavic Exalith brake pads for Exalith brake track with the front wheel: HG/Sram/Mavic 120 164 01 and ED 120 165 01</li> <li>• Yksion GripLink front clincher 23c 118 498 01</li> <li>• 1 Mavic butyl inner tube 111 040 01</li> <li>• Wheel user guide</li> <li>• Tire user guide</li> </ul>		Replacing the front axle and bearings Replacing a spoke Replacing the front rim Important notes about Exalith rims Tire replacement
		See 2005 TM, page 20 See 2003 TM, page 23 See 2003 TM, page 27 See 2011 TM, page 28 See Mavic tire user guide
		Refer to the website for quick and convenient access to information: <a href="http://www.tech-mavic.com">www.tech-mavic.com</a>

# KSYRIUM SLR *Front (tubular version)*

**Use: for road bike use only.** Any other use (such as on a tandem, cyclo-cross bike, or off-road use...) is highly inadvisable, is the sole responsibility of the user and voids the Mavic warranty.

Recommended maximum weight of the cyclist and equipment: 100 kg.

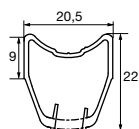
## WHEEL WEIGHT WITHOUT QUICK-RELEASE SKEWER AND WITHOUT TUBULAR

Front 620 g

## WHEEL REFERENCES

Front 111 378 10

## RIMS



### SALES REFERENCES:

**Tubular**

Front: 120 295 01



### Ø VALVE HOLE

Ø: 6.5 mm  
Length: ≥ 32 mm



### RECOMMENDED TIRE WIDTH

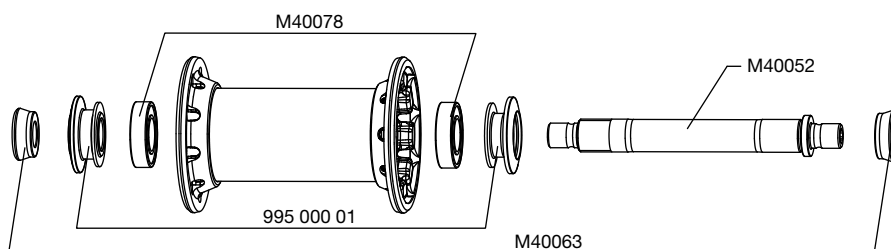
Dimensions: Ø 700  
633 tubular only  
Recommended tubular width: 19 to 23 mm



**EXALITH:** for efficient and long-lasting braking performance, use only the special Mavic® Exalith® brake pads supplied with your wheels. The use of other brake pads may be dangerous for the user and may void the warranty. Please carefully read the «Exalith Warning» provided with your wheels. Clean with a dry cloth or soapy water if necessary. The brake pads can be ordered separately using the following references 120 164 01 (HG, Sram, Mavic) and 120 165 01 (ED).

## HUBS

**MAINTENANCE:** Clean with a dry cloth or soapy water if necessary.  
Do not use a high-pressure washer.



## WHEEL BUILDING

### REFERENCES AND LENGTHS:

Front: 120 302 01, length 284.5 mm (per 12, integrated nipples)

### FEATURES:

Black bladed, straight pull Zicral spokes with integrated and self-locking M7 nipples

### LACING PATTERN:

Front: radial

### TENSION:

Front: 110 to 130 kg

## ACCESSORIES

### WHEELS SUPPLIED WITH:

- BR 601 front quick-release skewer M40149
- Computer magnet M40540
- Wheel bag M40135
- 2 pairs of Mavic Exalith brake pads for Exalith brake track with the front wheel: HG/Sram/Mavic 120 164 01 and ED 120 165 01
- Yksion GripLink front tubular 23c 119 412 01
- Wheel user guide
- Tubular user guide

## MAINTENANCE

Replacing the front axle and bearings  
Replacing a spoke  
Replacing the front rim  
Important notes about Exalith rims  
Bonding a tubular

See 2005 TM, page 20  
See 2003 TM, page 23  
See 2003 TM, page 27  
See 2011 TM, page 28  
See Mavic tubular user guide

Refer to the website for quick and convenient access to information: [www.tech-mavic.com](http://www.tech-mavic.com)