

AKSIUM 08

USE: use only on a road bike. Any other use (such as on a tandem, cyclo-cross bike, or off-road use...) is strongly inadvisable, is the sole responsibility of the user and voids the Mavic warranty.

WHEEL WEIGHTS WITHOUT QUICK RELEASE SKEWER:

Front: 870 g
Rear M10: 1000 g
Rear ED10: 985 g

BLACK WHEEL REFERENCES:

Front: 995 660 10
Rear M10: 996 661 11
Rear ED10: 995 662 12
Pair M10: 995 664 14
Pair ED10: 995 663 14

SILVER WHEEL REFERENCES:

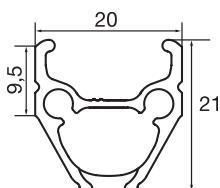
Front: 995 581 10
Rear M10: 995 582 11
Rear ED10: 995 652 12
Pair M10: 995 653 14
Pair ED10: 995 654 14

RIMS

SALES REFERENCES:

Black: 996 092 15 (front and rear)

Silver: 996 093 15 (front and rear)



VALVE HOLE Ø



Ø: 6.5 mm
Length: ≥ 32 mm

RECOMMENDED TIRE WIDTH AND PRESSURE



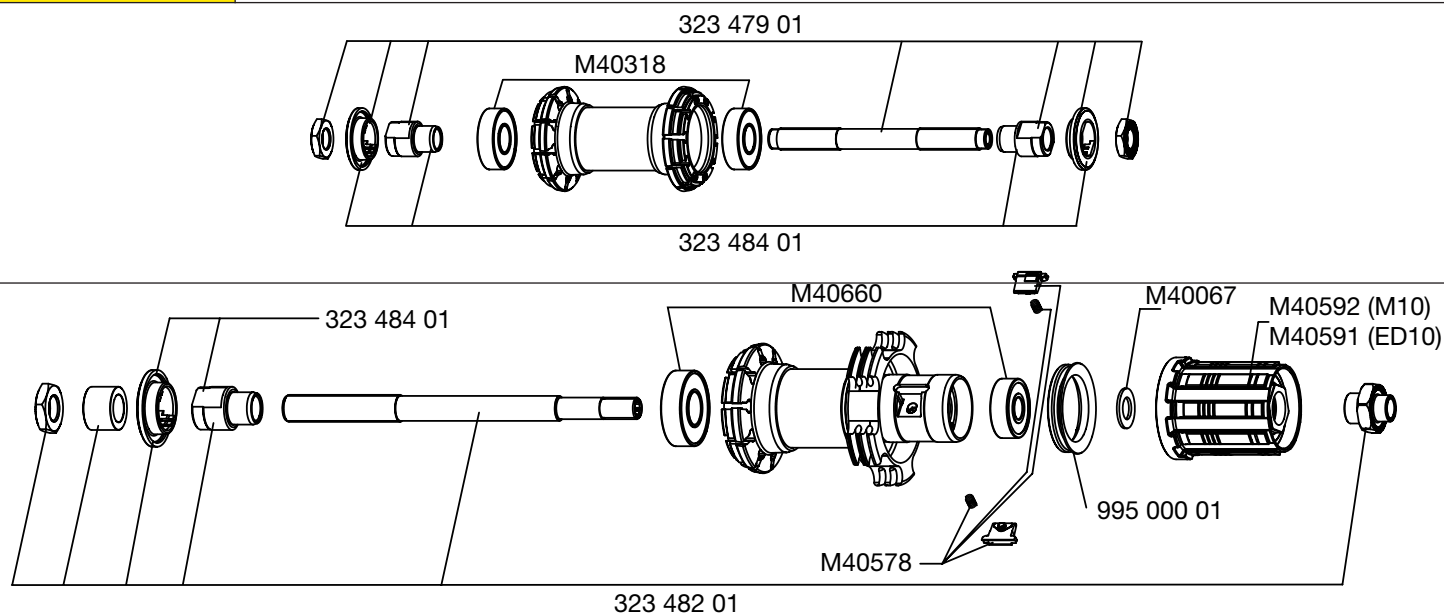
Dimensions: ETRTO 622 x 15C
Recommended tire width: 19 to 32 mm



Recommended tire pressure:
See page 21

HUBS

MAINTENANCE: Clean with a dry cloth or soap and water.
Do not use pressurized water.



As the front hub is made up of 3 parts, and the rear hub of 2 parts, maintenance operations to the hubs (replacing the axle or bearings) must always be carried out on the assembled wheel (hub, rim and spokes assembled).

WHEEL BUILDING

REFERENCES AND LENGTHS:

Black:

Front + rear non-drive side: 996 075 01, length 282.5 mm (per 10, with nipples)
Drive side: 996 076 01, length 305 mm (per 10, with nipples)

Silver:

Front + rear non-drive side: 996 077 01, length 282.5 mm (per 10, with nipples)
Drive side: 996 078 01, length 305 mm (per 10, with nipples)

FEATURES:

Black steel or silver stainless steel, bladed straight pull spokes with ABS nipples

LACING PATTERN:

Front: radial
Rear: crossed 2 drive side, radial non-drive side

TENSION:

Front: 80 to 90 kg
Rear drive side: 150 to 165 kg

ACCESSORIES

WHEELS SUPPLIED WITH:

- Traditional aluminum front quick release skewer M40350
- Traditional aluminum rear quick release skewer M40351
- ED10 12D locking ring M40640 (with rear wheel ED10)
- Rim tape
- User guide and warranty card

MAINTENANCE

Replacing the front axle and bearings
Replacing the rear axle
Maintaining and replacing the free wheel mechanism
Replacing the rear bearings
Replacing a spoke
Replacing the front rim
Replacing the rear rim

See 2004 TM page 19
See 2004 TM page 20
See 2004 TM page 21
See 2004 TM page 22
See page 25
See page 25
See page 26

To quickly consult this information in a practical manner, refer to www.tech-mavic.com